



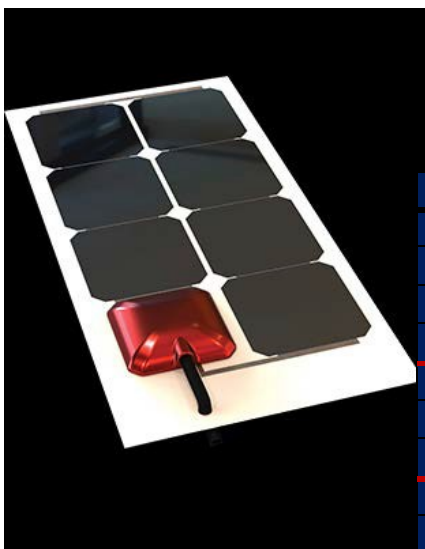
## SXp Series using "full square" cells

with up to 18% cell efficiency, great quality with the best price

Model#	SXp51	SXp60	SXp68L	SXp68Q	SXp102	SXp136	SXp154L	SXp154Q
Length (in/mm)	41"/1041mm	47.4"/1205mm	53.7"/1364mm	28.7"/728mm	41.2"/1046mm	53.7"/1364mm	60"/1523mm	41.2"/1046mm
Width (in/mm)	14.3"/364mm	14.3"/364mm	14.3"/365mm	26.9"/683mm	26.9"/683mm	26.9"/683mm	26.9"/683mm	39.2"/996mm
Weight	2.2 lbs.	2.4 lbs.	2.6 lbs.	2.6 lbs.	3.7 lbs.	4.6 lbs.	5.3 lbs.	5.3lbs
Power	51W	60W	68W	68W	102W	136W	154W	154W
Panel V (Vmp)	6V	7.1V	8V	8V	12.1V	16.1V	18.2V	18.2V
Max amps to 12v battery	4.2A	5A	5.7A	5.7A	8.5A	11.3A	12.8A	12.8A
Est. Sunny Day Yield	12-16Ahs/day	14-19Ahs/day	16-22Ahs/day	16-22Ahs/day	23-33Ahs/day	31-43Ahs/day	35-49Ahs/day	35-49Ahs/day
Price	\$259	\$309	\$349	\$349	\$519	\$689	\$789	\$789

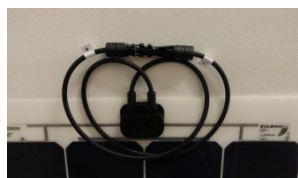
## AiO(All in One) Series available in select sizes of the SP, SR, & SXp

series. Constructed with a built-in 12V/24V waterproof charge controller for easy installation. (Wire directly to your battery) All models available w/ a Forex Plastic Backing & Grommets. Add 10% to price for Forex backing.



Model#	Size(in.)/Weight(lb)	Power	1-Stage Charge V	Max I @12V/24V	Price
SP23Ai1	23.7"x 11.5"/1.3 lbs	23W	13.8V/27.6V	2A/1A	\$269
SP47Q Ai1	23.7"x21.5"/2 lbs	47W	13.8V/27.6V	4A/2A	\$519
SP47L Ai1	44" x 11.5"/2bs	47W	13.8V/27.6V	4A/2A	\$519
SP72 Ai1	33.7"x21.5"/2.6lbs	72W	13.8V/27.6V	6A/3A	\$759
SR 68L Ai1	53.7"x14.4"/2.9lbs	68W	13.8V/27.6V	5.6A/2.8A	\$579
SR 68Q Ai1	28.7"x26.9"/2.9lbs	68W	13.8V/27.6V	5.6A/2.8A	\$579
SR 104	41.2"x26.9"/3.7lbs	104W	13.8V/27.6V	8.6A/4.3A	\$829
SXp64L Ai1	53.7"x14.4"/2.9lbs	64W	13.8V/27.6V	5.2A/2.6A	\$409
SXp64Q Ai1	28.7"x26.9"/2.9lbs	64W	13.8V/27.6V	5.2A/2.6A	\$409
SXP98 Ai1	41.2"x26.9"/3.7lbs	98W	13.8V/27.6V	8A/4A	\$549

### Cable connections

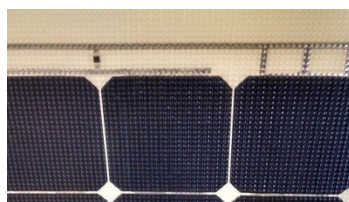


MC4 Quick Connects with junction box and 18" pigtails (Standard, comes with a blank MC4 set for wiring to controller)

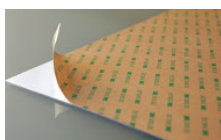


Rear Wires for wiring through hard mounting surface (special order)

### Panel Options

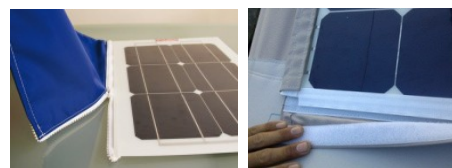


Panels are available with a slip-resistant textured surface (special order) no added cost on SP or SR & 20% added cost on SXp



Back side adhesive for permanent mounting on hard surface (special order \$42)

### Installation Options



For Velcro, Zipper, or Grommet Installations, Consult a canvas shop



Rigid plastic backing is available for installations over cross bars or uneven surfaces \$50 to \$100 depending on panel size